

lumiko

Part of klemko® elektrotechnik

LUMIKO LED DIMMERS

klemko®
ELEKTROTECHNIK

THE ART OF DIMMING THE WORLD'S FIRST SELF-LEARNING LED DIMMERS.

Meet Lumiko, a pioneering brand from the makers of the world's first self-learning LED dimmer. Our mission is to provide advanced lighting solutions that are not only affordable and smart, but also meet the latest technology standards. With Lumiko, you will enjoy industry-leading ease of installation and save precious time and money.

WITH A SIMPLE TWIST ROOMS ARE MORE PLEASANT AND HOMELY

Lumiko has a wide range of LED dimmers suitable for virtually all LED lamps on the market. Whether for homes, offices, shops or other applications, we have the perfect dimming solution for every situation. Our range of LED dimmers is put together with diversity in mind, so you always have a suitable solution.

Unique software

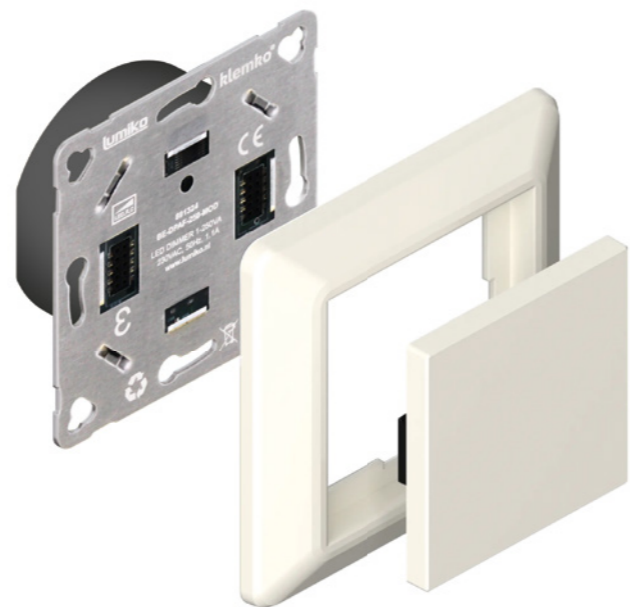
What really sets Lumiko apart is our unique software that measures the load and adjusts the dimming programme accordingly. This means that our dimmers adapt themselves to the specific requirements of your lighting system, always giving you the optimal dimming experience. Thanks to this intelligent functionality, our products perform consistently and manage to satisfy both the installer and the end user time after time.



NEW

MODULAR LED DIMMERS

The modular dimmer is a new concept consisting of basic elements and control modules, possibly complemented by a cover frame.



The control module can be easily clicked on the dimmer, allowing easy exchange of the control after installation without the involvement of an installer.

NEED ADVICE?

If you have any questions or need advice, please feel free to contact with us. Mail info@klemko.nl.

TABLE OF CONTENTS

Highlighted	4
Push/turn dimmers	8
Modular dimmers	10
Built-in modules	12

“At Lumiko, we believe in creating lighting solutions that make installers **work faster, more efficiently and smarter**. We strive to develop products that are easy to understand and install, without compromising on quality. “



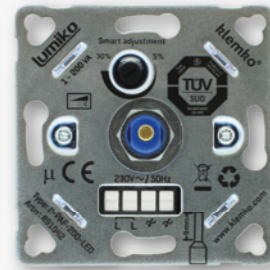
HIGHLIGHTED

The right light plays a crucial role in defining the atmosphere and functionality of any room. Our versatile dimmers offer the ideal solution to adjust light intensity to your needs. In this overview, we briefly explain how our dimming solutions can contribute to any situation, so you can always make the right choice.

UNIVERSAL 200 W

Whether you apply retrofit or professional lighting with a LED driver, this LED dimmer is able to dim it with trailing edge. The software in the dimmer analyses the fluctuations in the load and adjusts the dimmer accordingly.

Art. nr. 891042



1 - 200 W

LOW POWER 100 W

This dimmer offers a solution when using lighter loads up to 100 W and a lower number of light sources or drivers (maximum 10 pieces).

Art. nr. 891038



1 - 100 W

TRAILING EDGE OR LEADING EDGE

This dimmer works with both leading edge (RC) and trailing edge (RL) and is therefore suitable for all LED lamps. You can switch the dimming technology manually by means of a slide switch. Particularly handy for any installer to have in their van.

Art. nr. 891082



FASE AAN- /
AFSNIJDING

HIGH POWER 600 W

Are you looking for a dimmer for heavier loads up to 600 W and a large number of fixtures (maximum 40 pieces)? This dimmer is extremely suitable for this, and you can always use it for e.g. chandeliers or the Lumiko 3-phase eurorail spots.

Art. nr. 891028



5 - 600 W

DUO DIMMER 2 X 100 W

With this dimmer, you get two separate dimmers in one housing. A great solution if you have a lack of space, or if you need to swap out a duo halogen dimmer. Available brands of duo cover plates: Jung, Berker, Gira and Peha.

Art. nr. 891200

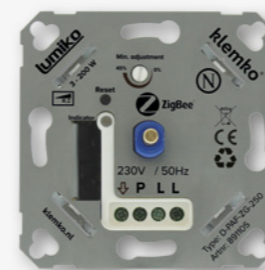


DUO DIMMER

ZIGBEE DIMMER

This dimmer can be operated manually or via an App with the wireless Zigbee protocol, such as: Philips Hue, HOMEY, Trust, Amazon or Alexa. Simply swap out the existing dimmer for the Zigbee dimmer to create a Smart Home application so that you can control everything from your lazy chair.

Art. nr. 891105



ZIGBEE

MULTIWAY SWITCHING

With this dimmer, multiple dimmers (parallel) can be installed in a **multiway switching setup**. This offers the possibility to dim the same lighting from different points. The dimmers can easily be connected to the existing wiring.

Art. nr. 891032

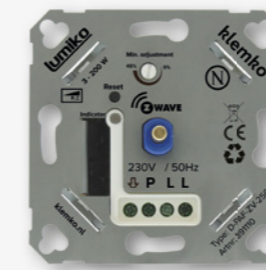


HOTEL/ WISSEL-
DIMMER

Z-WAVE DIMMER

You can operate this Z-Wave dimmer manually, but it can also be loaded into many different apps/home automation such as: Google Assistant/Google Home or FIBARO.

Art. nr. 891110



Z-WAVE

DIGITAL DIMMER 250 W

Control the perfect ambience with this handy dimmer between 1 to 250 W. Effortlessly adjust the minimum and maximum levels, even after installation. With a simple press and hold for 10 seconds, adjust the lighting exactly as you wish.

Art. nr. 891300



1 - 250 W

PROGRAMMABLE DIMMER 250 W

Experience ultimate control over your lighting. Set the perfect dimming level between 1 to 250W for the ideal atmosphere and enjoy convenient extra functions such as setting minimum/maximum dimming levels, delay time, fixed dimming level on switch-on and holiday mode.

Art. nr. 891304



1 - 250 W

DIGITAL DIMMER 500 W

Powerful dimmer, perfect for powers between 3 and 500 W. Effortlessly adjust the desired minimum and maximum levels, even after installation. With a simple press and hold for 10 seconds, effortlessly create the perfect lighting for any setting.

Art. nr. 891302



3 - 500 W

PROGRAMMABLE DIMMER 500 W

Total control over your lighting. Set the perfect dimming level between 3 and 500 W for the ideal ambience, and enjoy convenient **extra functions** such as setting minimum/maximum dimming levels, delay time, fixed dimming level on switch-on and holiday mode.

Art. nr. 891306



3 - 500 W

PUSH/TURN DIMMERS

The LED market is constantly growing with a wide range of light sources of varying quality. However, integrating a dimmer proves to be a serious challenge in practice. But don't worry! At Lumiko, we have a wide range of universal LED dimmers, making this problem a thing of the past.

Our dimmers are 2-wire connectable, making installation quick and easy to complete. Moreover, most pressure/turn dimmers feature a 4 mm shaft, including a 6 mm shaft adapter. As a result, almost all brands of switches can be effortlessly mounted on our dimmers.

891290 Spare parts set for dimmers

Includes: nut, washer, position washer and 6mm shaft adapter.



Universal LED dimmer



Low Power



High power



Trailing edge or leading edge



Multiway switching



Digital dimmer 250 W



Digital dimmer 500 W



Programmable dimmer 250 W



Programmable dimmer 500 W



zigbee



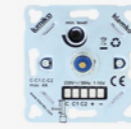
WAVE PLUS



DALI



1-10V Potentiometer



Din rail Trailing edge



Item number	891042	891038	891028	891082	891032	891300	891302	891304	891306	891105	891110	891005	891740	879200
Type of dimming	Trailing edge	Trailing edge	Trailing edge	Trailing- / leading edge	Trailing edge	Trailing edge	Trailing edge	Trailing edge	Trailing edge	Trailing edge	Trailing edge	DALI broadcast	1 - 10 V	Trailing edge
Type description	D-PAF-200-LED	DIM-PAF-1-100	DIM-PAF-5-600	DIM-UNI-1-200LT	DIM-MAST-MAST	D-PAF-250-DMM	D-PAF-500-DMM	D-PAF-250-PROG	D-PAF-500-PROG	D-PAF-ZG-250	D-PAF-ZV-250	D-UNI-DALI-MAST	D-POT500 WISSEL	DRDPAF-1KW

SPECIFICATIONS

Connection	2 wire	2 wire	2 wire	2 wire	2 wire	2 wire	2 wire	2 wire	2 wire	2 wire	2 wire	Primary 230 V	230V Optional	3 wire
Screw or plug-in connection														
Power*	1 - 200 W	1 - 100 W	5 - 600 W	Leading edge (1 tot 200 W) Trailing edge (1 tot 100 W)	10 - 250 W	1 - 250 W	3 - 500 W	1 - 250 W	3 - 500 W	3 - 200 W	3 - 200 W	✘	✘	10 - 1000 W
Number of LED lamps/drivers**	15 pcs	10 pcs	40 pcs	13 pcs leading edge 6 pcs trailing edge	8 pcs	Depends on Pow. fac. LED	Depends on Pow. fac. LED	Depends on Pow. fac. LED	Depends on Pow. fac. LED	8 pcs	8 pcs	50 pcs	100/500 pcs dependent on connector	30 pcs
Dimensions (L x W)	70 x 70 mm	70 x 70 mm	70 x 70 mm	70 x 70 mm	70 x 70 mm	70 x 70 mm	70 x 70 mm	70 x 70 mm	70 x 70 mm	70 x 70 mm	70 x 70 mm	70 x 70 mm	70 x 70 mm	105 x 64 mm
Height (H)	40 mm	25 mm	25 mm	25 mm	25 mm	22 mm	22 mm	22 mm	22 mm	25 mm	25 mm	34 mm (inbouw)	33 mm (built-in)	90 mm (surface)
Adjustable minimum	5 - 30%	0 - 50%	0 - 50%	0 - 50%	0 - 50%	Min + max niveau	Min + max niveau	Min + max niveau	Min + max niveau	0 - 50%	0 - 50%	0 - 50%	0 - 50%	0 - 40%
Changeover contact	Yes, with changeover switch	Yes, with changeover switch	Yes, with changeover switch	Yes, with changeover switch	No, multiple parallel possible	Yes, with changeover switch	Yes, with changeover switch	Yes, with changeover switch	Yes, with changeover switch	Ja, with pushbutton	Ja, with pushbutton	Yes, with second dimmer	Yes, with changeover switch	1 - 10 V / Puls

* At power factor = 1.0 ** An indication, remains dependent on the power factor, peak current and quality of the electronics.

DUO DIMMERS



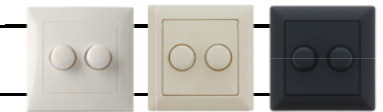
891200 - DUO-2x100W-LED 891195 - DUO2x100W-ZG-LED

SPECIFICATIONS

Connection:	2 wire
Power*:	2 - 100 W
Shaft diameter:	4x6 D-shape shaft
Number of LED lamps/drivers:	2 x 8 pcs
Dimensions (L x W x H):	70 x 70 mm
Adjustable minimum:	0 - 50 %

* At power factor = 1.0

SWITCHES



Peha	White	RAL 9010	891210
	Cream	RAL 1013	891220
Jung	White	RAL 9010	891212
	Cream	RAL 1013	891222
	Black	RAL 9005	891236
Berker	White	RAL 9010	891214
	Cream	RAL 1013	891224
Gira	White	RAL 9010	891216
	Cream	RAL 1013	891226
	Black	RAL 9005	891234

NEW

MODULAR DIMMERS

This concept includes both **basic elements** and **control modules** that can be combined with a cover frame. With effortless installation of the basic module in the wall and the addition of the control module, you not only gain control over lighting, but also intelligent functionality at your fingertips.

Step 1 - basic elements

Choose the right basic element, what do you want to control? Do you want switching or dimming and what is the power? For dimming, you can choose from phase cut or DALI, and for switching and dimming phase cut there is also the option for 2-pole switching to avoid leakage current problems.

Step 2 - control modules

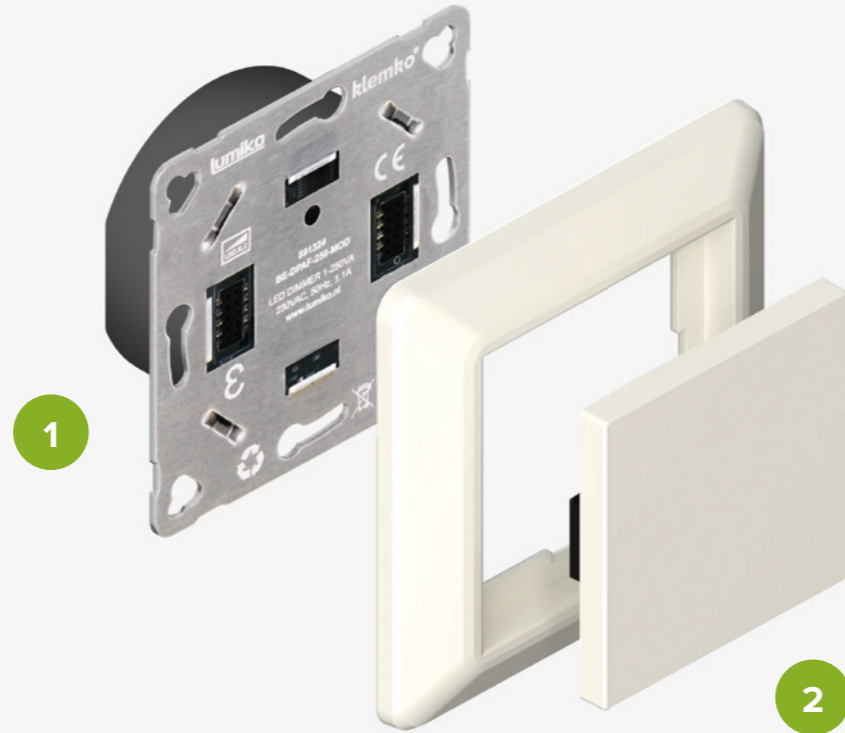
Choose the right control module, how do you want to operate? Do you prefer pressing or turning? Do you long for additional functions such as a follow-up timer, Astro time switch and app control with fade options on switch-off? The choice is yours, because with our extensive range, there is something for everyone.

Step 3 - cover frame

The dimmers can be finished with a Lumiko cover frame, but because of the standard size of 55x55 mm, they also fit in the cover frames of many other brands.

The control modules can be easily clicked onto the dimmer, making it easy to exchange the controls after mounting without the help of an installer.

Configure the perfect dimmer yourself.



LUMIKO ASTRO APP



Meet the Lumiko Astro App and effortlessly regulate your lighting at specific times and natural light moments, including adjustable brightness at the dimmable basic modules. Configure your lighting to your liking and, for example, have your lights come on at sunset and subtly dim to 20% after midnight to avoid creating too much ambient light. The app seamlessly syncs with your location for accurately timed lighting. Unleash your creativity and design unique scenarios for various situations, days and moments. The app is now available on the Apple App Store and Google Play!

1

BASIC ELEMENTS

891320 2 wire switch module 10 A For switching on/off of lighting	891322 3 wire schakelmodule 8 A For 2-pole on/off switching of lighting	891324 2 wire dimmer 1 - 250 W For flowing dimming of lighting	891326 2 wire dimmer 3 - 500 W For flowing dimming of larger loads	891328 3 wire dimmer 3 - 300 W For 2-pole dimming and switching of lighting	891330 Broadcast controller DALI broadcast dimmer

2

CONTROL MODULES

891340 Push button operation For switching and dimming	891360 Push button Lumiko astro app With extra settings: including dimming level, time, etc.	891380 Push button Casambi For wireless intergration in Casambi App	891390 Push button Zigbee For wireless intergration in Zigbee App	891350 Push button postflow timer Lighting switches off automatically after 1, 5, 30 or 60 minutes.	891355 Push button up/down/fading/out. For dimming and switching off with delay time.	891370 Touch free Touch-free switching/dimming module.
				*Only compatible with switching modules		
891345 Turn button operation For switching and dimming	891365 Turn button Lumiko astro app With extra settings: including dimming level, time, etc.	891375 Turn button Casambi For wireless intergration in Casambi App	891385 Turn button Zigbee For wireless intergration in Zigbee App			

3

COVER FRAMES

891402 FRAME-BM-9003-W Cover frame (RAL9003)	891404 FRAME-BM-9003-ZW Cover frame (RAL9004)

BUILT-IN MODULES

Compact built-in modules for smart lighting

Intelligent controls are increasingly used in offices, schools and homes. Lumiko's product range offers a solution in lighting automation that allows lighting to be remotely switched on, dimmed and adjusted in terms of colour. This means a suitable solution can be installed for any application.

Puls switch module Puls dimming module Casambi dimmer



Build-in pushbutton



	890107	890105	
	890157	890155	
CASAMBI			890160
lumiko easy	890718	890200	
		890103	

SPECIFICATIONS			
Type of dimming	Trailing edge		
Power	1 - 200 W	1 - 200 W	1 - 100 W
Current	Output 1,5 A	Output 1,5 A	0,65 A
Voltage	Primair 100 - 240 Vac	Primair 100 - 240 Vac	Primair 85 - 240 Vac
Dimming	App / pushbutton	App / pushbutton	App
Dimensions (L x W)	45,5 x 45 mm	45,5 x 45 mm	36,3 x 40,4 mm
Height (H)	20,3 mm	20,3 mm	14 mm

890010 DIN rail holder (for built-in modules)

For installation of a built-in module to a 35mm DIN rail.



lumiko easy

CONNECT WITHOUT FUSS: CLICK-CLICK AND READY IN A HANDTURN!

Discover Lumiko Easy Protocol, the ultimate solution for effortless connections. With Lumiko Easy, you no longer have to hassle with gateways or hubs. With just one driver and a handy remote control, you're ready to control all your Lumiko Easy products. With just a few clicks, you're ready to enjoy the more seamless experience of Lumiko Easy.



Download our brochure via the QR code!

Our brochure contains all the information on our Lumiko Easy products.

MORE THAN DIMMING

In addition to its well-known LED dimmers, Lumiko offers an extensive range of LED lighting and control systems for installers. For large projects from hotels to restaurants or homes from kitchens to bathrooms you can always turn to us. With a focus on quality and experience, Lumiko has designed a range of products to achieve optimal energy savings without compromising on light quality and ease of installation. The Lumiko collection includes advanced fixtures designed as replacements for conventional halogen spots. It strives for outstanding lighting performance, optimum cost savings and effortless installation.

SPOTS
FIXTURES
DOWNLIGHTERS
TRACKSPOTS
LED DRIVERS
LED STRIPS
OUTDOOR LIGHTING

More about Lumiko's highlights and achievements discover on our website:
www.klemko.nl/catalogus/led-licht



DIMMABLE NO MATTER WHAT.